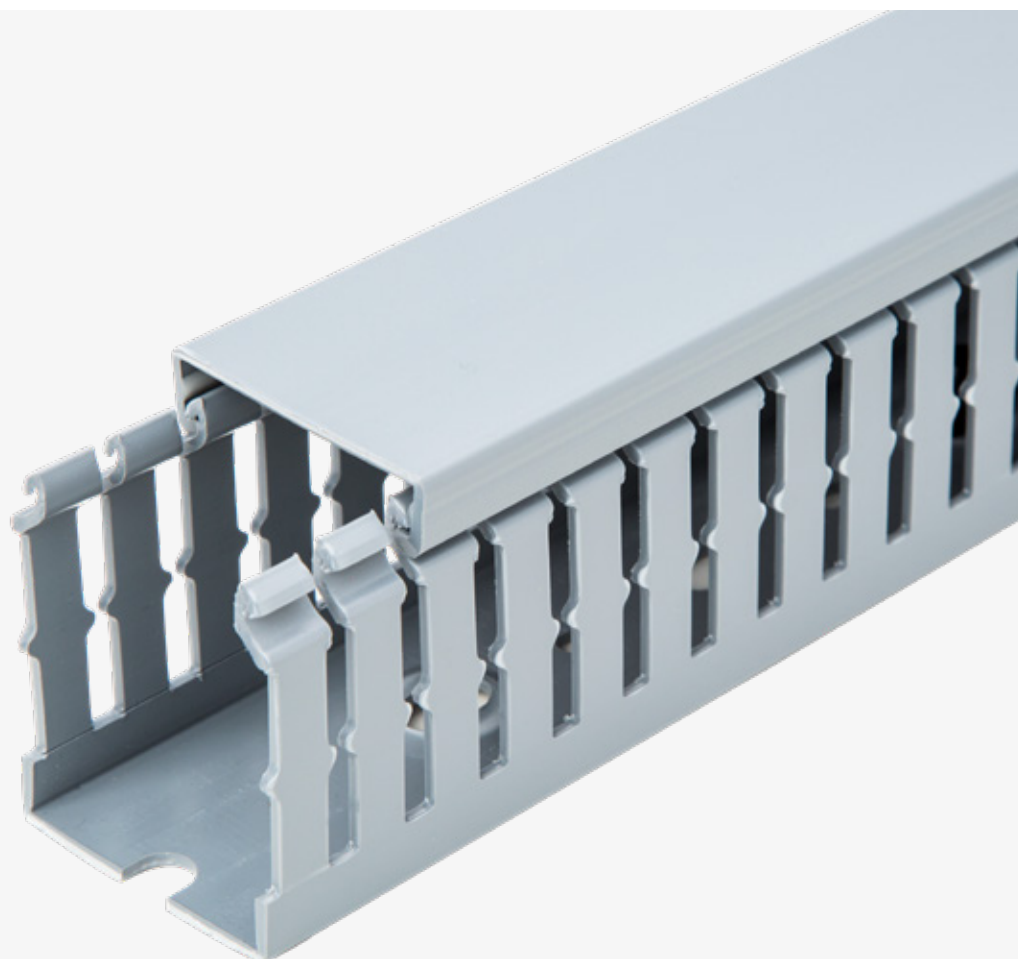


—
PRODUCT BROCHURE

Ty-Duct[®] wiring duct

Wire management made easy



Overview

The versatile configurations you need for routing and concealing wiring

ABB's innovative Ty-Duct products offer a total solution for routing and concealing wiring in control panels. Many different sizes are available to accommodate anything from the smallest wall-mount panel to larger integrated systems. Impressive features are incorporated into all of our wiring duct solutions.

Ty-Duct wiring duct features

- Available in solid, wide slot, narrow slot and round hole versions to meet your capacity and flexibility needs
- Widths from 0.75" to 6" and depths from 1" to 5"
- Optional adhesive back for quick, hassle-free installation
- Complete selection of accessories and tools for installation
- Lead-free construction
- Lightweight halogen-free version available in wide and narrow slot wiring duct

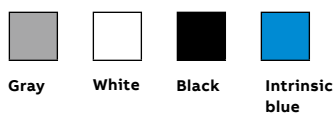
Ty-Duct wiring duct certifications

- UL Recognized continuous-use temperature from -40 °C (-40 °F) up to 60 °C (140 °F)
- UL flammability rating of UL94V-0
- CE compliant
- RoHS compliant

Metric duct certifications

- CSA certified file no. 077988
- RoHS compliant
- Conforms to EN50085-2-3 standard
- DIN standard mounting holes

Available in four colors



Ordering information

Accessories

Trust ABB for all your wiring accessories

Accessories include:

- Divider walls, enabling multiple channels to be created within a duct channel
- Universal mounting clips that secure channels and wires
- Corner strips that keep corners rigid at tee junctions when used for control panel applications
- Joining strips to unite sections of duct and keep the wall rigid
- Plastic rivets for securing ducts quickly and easily



= space for color identifier:

G = Gray



W = White



B = Black



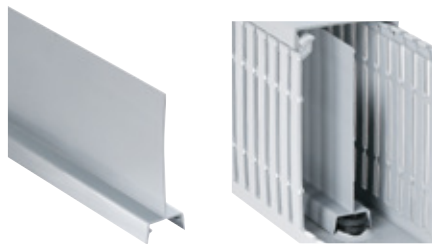
I = Intrinsic blue



Divider wall

Create multiple channels inside wiring ducts.

- Separates high and low voltage to reduce shortages and interference
- Mount inside any Ty-Duct PVC wiring duct using universal mounting clips
- Score lines enable sections to be removed
- Solid and wide slotted style



Cat. no.	Description	Length (ft.)	Std. ctn. qty.
TY1D[][]_6	1" High wall divider	6	120
TY1.5D[][]_6	1.5" High wall divider	6	120
TY2D[][]_6	2" High wall divider	6	120
TY3D[][]_6	3" High wall divider	6	120
TY4D[][]_6	4" High wall divider	6	120
TY5D[][]_6	5" High wall divider	6	120

+ Catalog number must be completed by adding suffix SP for solid or WP for wide slot.

Example: TY2DSPG6 is a 2" high solid wall gray divider.

Universal mounting clips

One size fits all.

- Added before or after the duct is in place, without additional hardware
- Twists into place — holds securely
- Installs easily using a screwdriver
- Accommodates up to 40 lb. cable ties
- Black polycarbonate construction



Cat. no.	Description	Qty.
UMC	Universal fastener mount	100 pk

Corner strips

Install smooth round corners on your wiring duct.

- Constructed of rigid PVC
- One-piece design makes installation a snap
- Works with any Ty-Duct wiring duct
- Select from a variety of sizes



Cat. no.	Description	Length (ft.)	Std. ctn. qty.
TYCS[_]6	Corner strip	6	120

+ Catalog number must be completed by adding suffix G for gray, W for white, I for intrinsic blue, B for black.
 Example: TYCSG6 is a gray corner strip.

Joining strips

Join duct sections easily.

- Slides on duct
- Constructed of rigid PVC
- One-piece design makes installation easy
- Works with any Ty-Duct wiring duct



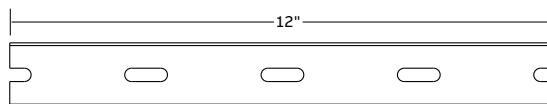
Cat. no.	Description	Length (ft.)	Std. ctn. qty.
TYJC[_]6	Joining strip	6	120

+ Catalog number must be completed by adding suffix G for gray, W for white, I for intrinsic blue, B for black.
 Example: TYJCG6 is a gray joining strip.

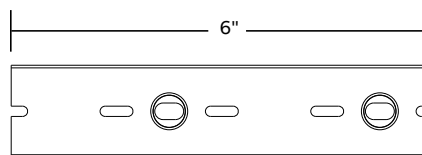
Plastic rivets

Plastic rivets make mounting ducts easy.

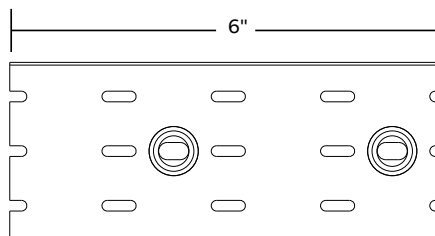
- Fast installation
- Durable and economical
- One size



Minimum mounting rivet distance for ducts of 0.75" and 1" wide.



Minimum mounting rivet distance for ducts 1.5" wide.



Minimum mounting rivet distance for ducts greater than 1.5" wide. Installed top and bottom.

Cat. no.	Description	Qty.
08200C	3/16" Plastic rivet	100 pk

Overview

How to order

Ordering the Ty-Duct products you need is as easy as 1, 2, 3.

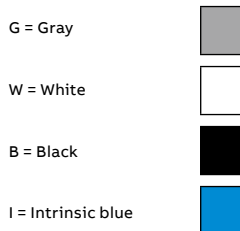
After selecting the appropriate Ty-Duct solutions for your application, make sure you complete the following checklist.

For Ty-Duct wiring duct and covers:

1. Specify color
2. Indicate if you want the duct without mounting holes
3. Indicate if you want an adhesive-backed duct (not available with halogen-free duct)

2. To order duct without mounting holes, add suffix NM to catalog number. Example: TYD75X1WPG6NM is a 0.75" x 1" wide slot gray duct with no mounting holes.

[] = space for color identifier:



3. To order adhesive-backed duct, add suffix A to Catalog Number. Example: TYD75x15WPB6A is a 0.75" x 1.5" wide slot black duct with adhesive backing. Shelf life for adhesive is 1 year.

SP = Solid
WP = Wide slot
NP = Narrow slot
RP = Round hole

Cat. no.	Description	Nominal width x nominal height		Cover cat. no.	Duct std. ctn. qty.	Cover std. ctn. qty.	Length (ft.)
		Size (W x H)					
		In.	mm				
TYD75X1WP[G]6NM	0.75 x 1 wide slot duct	0.94 x 1.09	23.9 x 27.7	TYD75CP[G]6	120	120	6
TYD75X15WP[B]6A	0.75 x 1.5 Wide slot duct	0.94 x 1.56	23.9 x 39.6		120		
TYD75X2WP[I]6	0.75 x 2 wide slot duct	0.94 x 2.07	23.9 x 52.6		120		

Standard carton quantity

1. Catalog number must be completed by adding suffix G for gray, W for white, I for intrinsic blue, B for black. Example: TYD75x2WPI6 is a 0.75" x 2" wide slot intrinsic blue duct. Cover color must be specified also.

Standard lengths are 6 feet.

For Ty-Duct dividers:



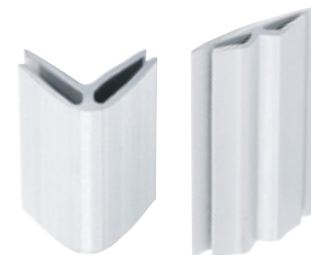
Catalog number must be completed by adding suffix SP for solid or WP for wide slot. Example: TY2DSPG6 is a 2" high solid wall gray divider.

Cat. no.	Description	Length (ft.)	Std. ctn. qty
TY2D[SP][G]6	2" High wall divider	6	120

Catalog number must be completed by adding suffix G for gray, W for white, I for intrinsic blue, B for black. Example: TY2DSPG6 is a 2" high solid wall gray divider.

For Ty-Duct corner and joining strips:

Corner strip sample shown below. Joining strips are ordered the same way.



Cat. no.	Description	Length (ft.)	Std. ctn. qty
TYCS[G]6	Corner strip	6	120

Catalog number must be completed by adding suffix G for gray, W for white, I for intrinsic blue, B for black. Example: TYCSG6 is a gray corner strip.

Ordering information

Accessories

Wire retainer

Holds wires in place for faster, easier installation and routing.

- One size fits all
- Comes in gray and clear plastic to blend with any duct color
- Size is 2.5"L and 0.281" x 0.18"

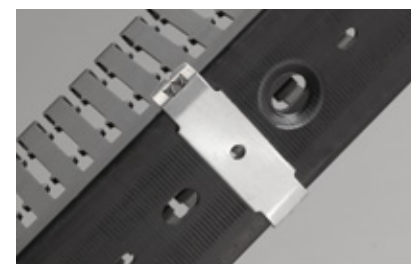


Cat. no.	Description	Qty.
TYWRC	Wire retainer, clear	100
TYWRG	Wire retainer, gray	100

Mounting clips

Ideal for high-temperature environments.

- Speeds duct mounting
- Enables duct removal
- Provides a stand-off between panel and duct to prevent direct heat transfer — ideal for high temperature environments



Cat. no.	Width (in.)	Std. ctn. qty.
TY1MC	1	100
TY15MC	1.5	100
TY2MC	2	100
TY3MC	3	100

All are 0.75" D x 0.35" H and made of Type 316 stainless steel.