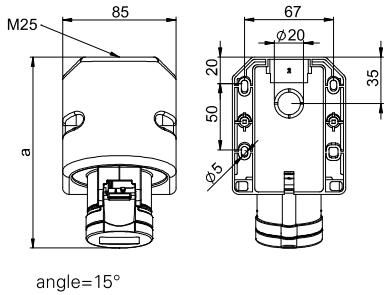


CEE Wall sockets

Wall socket IP44

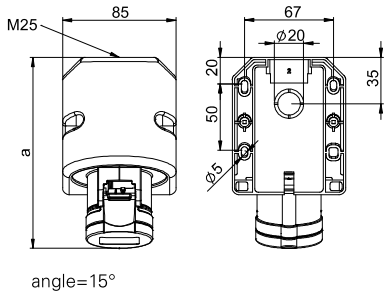


	16 Amp			32 Amp		
	3	4	5	3	4	5
Poles	3	4	5	3	4	5
a [mm]	142	145	144	155	155	157
Height [mm]	97	98	104	106	106	111
M [mm]	25	25	25	25	25	25
Wire flexible [mm ²]	1-2,5			2,5-6		
Wire solid [mm ²]	1-4			2,5-10		
Contact screws [Ncm]	100			110		
Weight [g]	226	240	259	274	291	318

- with screw terminals
- housing material: PA6
- contacts: brass
 - to order nickel-plated contacts please add a "v" e.g. 115-6v
- top and rear entry
- incl. threaded cable grommet

IP44 splashproof

Wall socket IP44 TT

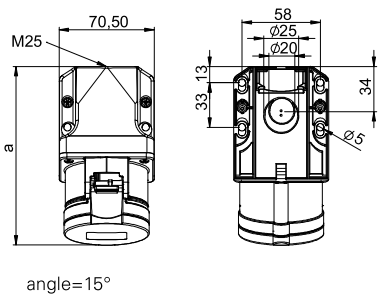


	16 Amp			32 Amp		
	3	4	5	3	4	5
Poles	3	4	5	3	4	5
a [mm]	142	145	144	155	155	157
Height [mm]	97	98	104	106	106	111
M [mm]	25	25	25	25	25	25
Wire flexible [mm ²]	1-2,5			2,5-6		
Wire solid [mm ²]	1-4			2,5-10		
Weight [g]	228	240	264	274	290	319

- screwless connection technology
- housing material: PA6
- contacts: brass
 - to order nickel-plated contacts please add a "v" e.g. 115-6TTv
- top and rear entry
- incl. threaded cable grommet

IP44 splashproof

Wall socket IP44

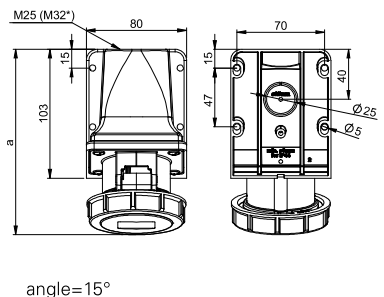


	16 Amp			32 Amp		
	3	4	5	3	4	5
Poles	3	4	5	3	4	5
a [mm]	132	133	133	145	145	145
Height [mm]	94	97	100	103	103	107
M [mm]	25	25	25	25	25	25
Wire flexible [mm ²]	1-2,5			2,5-6		
Wire solid [mm ²]	1-4			2,5-10		
Contact screws [Ncm]	100			110		
Weight [g]	202	214	233	249	365	292

- with screw terminals
- housing material: PA6
- contacts: brass
 - to order nickel-plated contacts please add a "v" e.g. 115-6kv
 - to order Turbo Terminal design (screwless connection technology) please add a „TT“ e.g. 115-6kTT
- top and rear entry
- incl. threaded cable grommet

IP44 splashproof

Wall socket IP67



	16 Amp			32 Amp		
	3	4	5	3	4	5
Poles	3	4	5	3	4	5
a [mm]	146	148	148	161	161	163
Height [mm]	96	99	102	108	108	112
M* [mm]	25	25	25	25	25	25
Wire flexible [mm ²]	1-2,5			2,5-6		
Wire solid [mm ²]	1-4			2,5-10		
Contact screws [Ncm]	100			110		
Weight [g]	226	241	275	298	314	351

- with screw terminals
- housing material: PA6
- contacts: brass
 - to order nickel-plated contacts please add a "v" e.g. 1152-6v
 - to order Turbo Terminal design (screwless connection technology) please add a „TT“ e.g. 1152-6TT
- top and rear entry
- incl. threaded bung

IP67 watertight

*M32 optional on request available

Amp.	Poles	pack. unit	110V~	230V~	400V~	500V~	>50-500V~	>50-500V~
			50/60Hz 4h	50/60Hz 3p=6h 4p+5p=9h	50/60Hz 3p=9h 4p+5p=6h	50/60Hz 7h	100-300Hz 10h	301-500Hz 2h
			Cat.No.	Cat.No.	Cat.No.	Cat.No.	Cat.No.	Cat.No.
16	3	10	113-4	113-6	113-9	113-7	113-10	113-2
16	4	10	114-4	114-9	114-6	114-7	114-10	114-2
16	5	10	115-4	115-9	115-6	115-7	115-10	115-2
32	3	10	123-4	123-6	123-9	123-7	123-10	123-2
32	4	10	124-4	124-9	124-6	124-7	124-10	124-2
32	5	10	125-4	125-9	125-6	125-7	125-10	125-2



113-6

16	3	10	113-4TT	113-6TT	113-9TT			
16	4	10	114-4TT	114-9TT	114-6TT			
16	5	10	115-4TT	115-9TT	115-6TT			
32	3	10	123-4TT	123-6TT	123-9TT			
32	4	10	124-4TT	124-9TT	124-6TT			
32	5	10	125-4TT	125-9TT	125-6TT			

TURBOclick
TERMINAL



113-6TT

16	3	10	113-4k	113-6k	113-9k	113-7k	113-10k	113-2k
16	4	10	114-4k	114-9k	114-6k	114-7k	114-10k	114-2k
16	5	10	115-4k	115-9k	115-6k	115-7k	115-10k	115-2k
32	3	10	123-4k	123-6k	123-9k	123-7k	123-10k	123-2k
32	4	10	124-4k	124-9k	124-6k	124-7k	124-10k	124-2k
32	5	10	125-4k	125-9k	125-6k	125-7k	125-10k	125-2k



115-6k

16	3	5	1132-4	1132-6	1132-9	1132-7	1132-10	1132-2
16	4	5	1142-4	1142-9	1142-6	1142-7	1142-10	1142-2
16	5	5	1152-4	1152-9	1152-6	1152-7	1152-10	1152-2
32	3	5	1232-4	1232-6	1232-9	1232-7	1232-10	1232-2
32	4	5	1242-4	1242-9	1242-6	1242-7	1242-10	1242-2
32	5	5	1252-4	1252-9	1252-6	1252-7	1252-10	1252-2



1152-6

