

# Warning/Signal Light Mounting Brackets

User can select from a variety of bracket options depending on their application conditions.

Units: mm

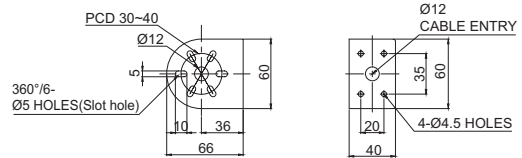
## • TWS45 | TWS80

Bracket options for direct mount warning/signal light installation.  
Material: Steel  
Color: Silver, Ivory

Product Image	Technical Diagram for Applicable Models
---------------	---



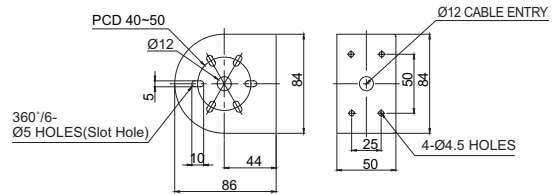
TWS45



S50 Series, S60 Series, MFL60, Q60L



TWS80



S80 Series, S80SOL, MFL80, SMCL80, QMCL80, Q80L

## • TWA45 | TWA80

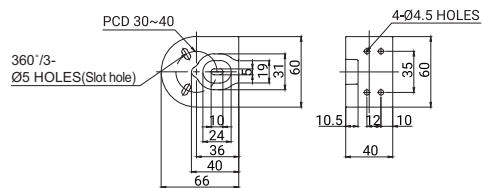
Bracket options for direct mount warning/signal light installation.  
Bracket structure allows for contained and tidy wiring with no exposed wires.

Material: PC  
Color: Black, Ivory

Product Image	Technical Diagram for Applicable Models
---------------	---



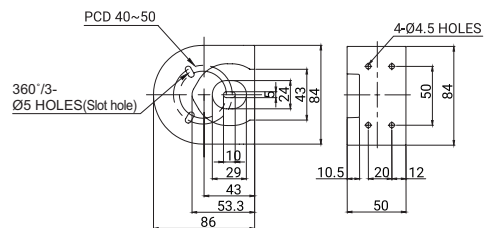
TWA45



S50 Series, S60 Series, MFL60, Q60L



TWA80



S80 Series, S80SOL, MFL80, SMCL80, QMCL80, Q80L

# Warning/Signal Light Mounting Brackets

Units: mm

## • SWP125

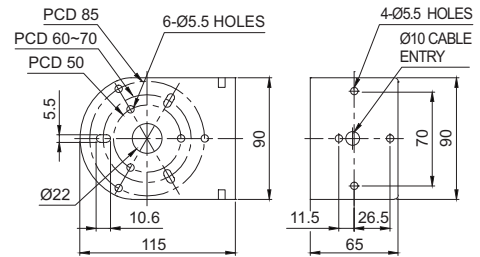
Bracket options for direct mount warning/signal light installation.

Material: Steel  
Color: Silver, Ivory



### Product Image

### Technical Diagram for Applicable Models



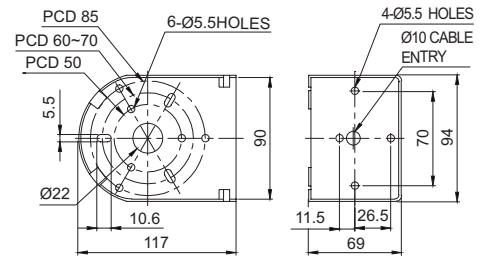
SWP125

S100 Series, S125 Series, STDL, STNDL, STND100 / STND125, QMCL, Q100L, Q125L

## • SWM125

Bracket options for direct mount warning/signal light installation Bracket structure allows for contained and tidy wiring with no exposed wires.

Material: PC  
Color: Ivory



SWM125

S100 Series, S125 Series, STDL, STNDL, STND100 / STND125, Q100L, Q125L