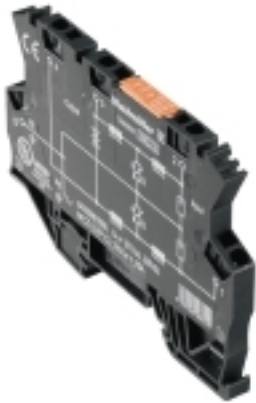


MCZ OVP CL 24VUC 1,25A

Weidmüller Interface GmbH & Co. KG
Klingenbergstraße 26
D-32758 Detmold
Germany

www.weidmueller.com



- Slimline overvoltage protection terminal with tension clamp connection
- 6 mm Slimline fine overvoltage protection
- fast wiring thanks to TS contact and tension clamp connections
- can be cross-connected

General ordering data

Version	MCZ SERIES, Surge protection for instrumentation and control, 1.25 A
Order No.	8448960000
Type	MCZ OVP CL 24VUC 1,25A
GTIN (EAN)	4032248068104
Qty.	10 pc(s).

Creation date February 20, 2021 12:45:11 PM CET

Catalogue status 12.02.2021 / We reserve the right to make technical changes.

MCZ OVP CL 24VUC 1,25A

Weidmüller Interface GmbH & Co. KG

Klingenbergstraße 26

D-32758 Detmold

Germany

www.weidmueller.com

Technical data

Dimensions and weights

Depth	63.5 mm	Depth (inches)	2.5 inch
Height	91 mm	Height (inches)	3.583 inch
Net weight	25.3 g	Width	6 mm
Width (inches)	0.236 inch		

Temperatures

Storage temperature	-40 °C...85 °C	Operating temperature	-40 °C...60 °C
---------------------	----------------	-----------------------	----------------

Environmental Product Compliance

REACH SVHC	Lead 7439-92-1
------------	----------------

Rated data UL

Certificate No. (UL)	E311081
----------------------	---------

General data

Colour	black	Design	Terminal
Height with TS 35	63.5 mm	Protection degree	IP20
Rail	TS 35	Segment	Measurement - Monitoring - Setting
UL 94 flammability rating	V-0	Version	Surge protection for measurement and control

Insulation coordination acc. to EN 50178

Pollution severity	2	Surge voltage category	III
--------------------	---	------------------------	-----

Rated data IEC / EN

Discharge current, I_{imp} (10/350 μ s)	1 kA	Discharge current, max. (8/20 μ s)	5 kA
Fuse	1.3 A	Inductance L and L1	35 μ H
Lightning test current I_{imp} (10/350 μ s)	1 kA	Limiting frequency (-3 dB) at load resistance	500 kHz 240 Ω
Load resistance (for limiting frequency)	240 Ω	Max. continuous voltage, U_c (AC)	27 V
Operating current, I_{max}	1.25 A	Operating voltage	38 V
Protection level on output side Wire-PE 1 kV/ μ s, typically	40 V	Protection level on output side Wire-PE 8/20 μ s, typically	65 V
Protection level on output side Wire-wire 1 kV/ μ s, typically	80 V	Protection level on output side Wire-wire 8/20 μ s, typically	130 V
Rated current I_N	1.25 A	Rated voltage (AC)	24 V
Rated voltage (DC)	24 V	Rated voltage (DC), max.	38 V
Requirements category acc. to IEC 61643-21	D1	Response time	\leq 100 ps
Standards	HART-compatible	Voltage type	AC/DC
Volume resistance	1.00 Ω		

MCZ OVP CL 24VUC 1,25A**Weidmüller Interface GmbH & Co. KG**

Klingenbergstraße 26

D-32758 Detmold

Germany

www.weidmueller.com

Technical data**Connection data**

Cross-section	1.5 mm ²	Wire connection method	Spring connection
Type of connection	Tension-clamp connection	Stripping length, rated connection	8 mm
Clamping range, rated connection	1.5 mm ²	Clamping range, min.	0.5 mm ²
Clamping range, max.	1.5 mm ²	Wire connection cross section AWG, min.	AWG 26
Wire connection cross section AWG, max.	AWG 16	Wire cross-section, solid, min.	0.5 mm ²
Wire cross-section, solid, max.	1.5 mm ²	Wire cross-section, solid, min. (AWG)	AWG 26
Wire cross-section, solid, max. (AWG)	AWG 16	Wire connection cross section, finely stranded, min.	0.5 mm ²
Wire connection cross section, finely stranded, max.	1.5 mm ²	Wire cross-section, finely stranded, min. (AWG)	AWG 26
Wire cross-section, finely stranded, max. (AWG)	AWG 16	Wire connection cross-section, finely stranded with wire-end ferrules DIN 46228/4, min.	0.5 mm ²
Wire connection cross-section, finely stranded with wire-end ferrules DIN 46228/4, max.	1.5 mm ²	Conductor cross-section, flexible, AEH (DIN 46228-1), min.	0.5 mm ²
Conductor cross-section, flexible, AEH (DIN 46228-1), max.	1.5 mm ²	Blade size	0.6 x 3.5 mm

Classifications

ETIM 6.0	EC000943	ETIM 7.0	EC000943
ECLASS 9.0	27-13-08-07	ECLASS 9.1	27-13-08-07
ECLASS 10.0	27-13-08-07	ECLASS 11.0	27-13-08-07

Approvals

Approvals



ROHS	Conform
UL File Number Search	E311081

Downloads

Approval/Certificate/Document of Conformity	CE PAPER Declaration of Conformity
Brochure/Catalogue	CAT 4.4 ELECTR 16/17 EN
Engineering Data	STEP
Engineering Data	EPLAN.WSCAD
User Documentation	Instruction sheet

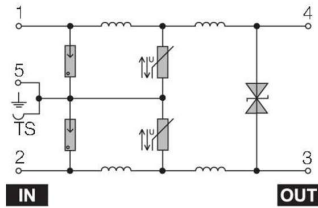
MCZ OVP CL 24VUC 1,25A

Weidmüller Interface GmbH & Co. KG
Klingenbergstraße 26
D-32758 Detmold
Germany

www.weidmueller.com

Drawings

Electric symbol



Circuit diagram